

PMP 4.0 *Action Manager*



Recording all calculations

The PMP software stands out through a high flexibility, as different calculation- and visualisation methods can be connected with each other to one complex solution.

This **ACTION MANAGER** brings some light in these connections. If a calculation is active, the action will be saved with all concerned objects and settings. An action list arises. It is applied in order to visualise the development of result objects in form of connections to the start objects in the project view. Each calculation is represented by a connection line, which connects start- and result objects .

These connections, filed in the action list, form the basis for repeating actions easily. Therefore, two new menu items are available, which allow to

- ◆ repeat a calculation with changed values or
- ◆ update the whole project and to perform all calculations of the action list. According to the scope of the project, very complex evaluations can be handled quite simple.

EXAMPLE:

Evaluating grinding tests

GOAL:

Searching for an ideal throughput

The optimal throughput for a fixed fineness should be find out from 7 grinding tests under different grinding conditions. Therefore, a project template can be created (see figure 1). Start objects as well as result objects are included with the corresponding connections. The following evaluation steps are fixed:

- ◆ Evaluation 1: (red line) Evaluating the RRSB-approximation
- ◆ Evaluation 2: (blue) Evaluating the context between parameter d' of the RRSB-Function and throughput
- ◆ Evaluation 3: (green): evaluating the context between steepness parameter n and throughput
- ◆ Evaluation 4: (yellow) evaluating the test results at optimal throughput (0,2 t/h)
- ◆ Evaluation 5: (pink) evaluating the test results in comparison with fixed nominal distribution

The results can be represented significantly by views, which are connected with the button on the right side of the project windows.

PROPERTIES AND APPLICATION BENEFITS

The action manager enables to reproduce calculations in PMP-Projects by means of object connections in the project window and the action table. Knowing these connections allows to carry out complex evaluations routinely within 3 steps:

- ◆ Step 1: Data input
Via import or manual table input
- ◆ Step 2: Performance of calculations in single steps completely
- ◆ Step 3: Presentation of results
graphical and tabular representations
flow sheet displays
print journals

Work will get especially effective if templates are created for important evaluation processes. These templates can be administrated centrally and ensure an uniform evaluation, communication and presentation of results.

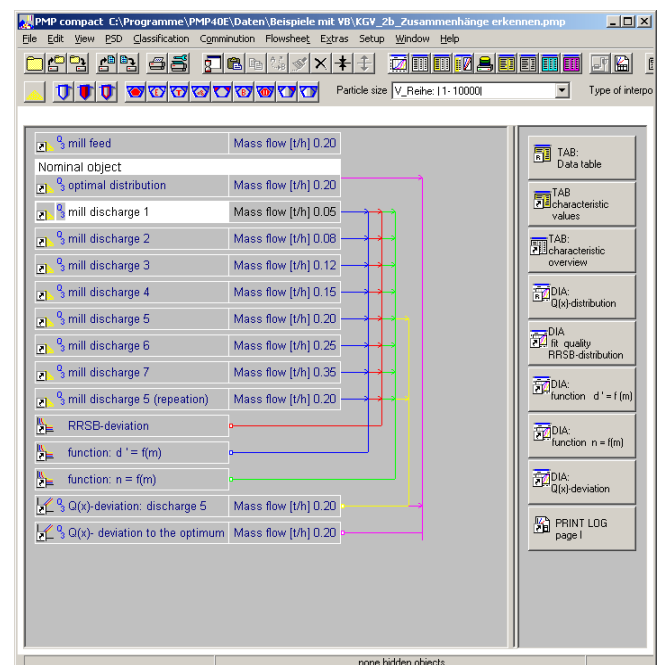


figure 1 View of the example project with necessary data objects (left), connections (coloured lines) and views of data (right)